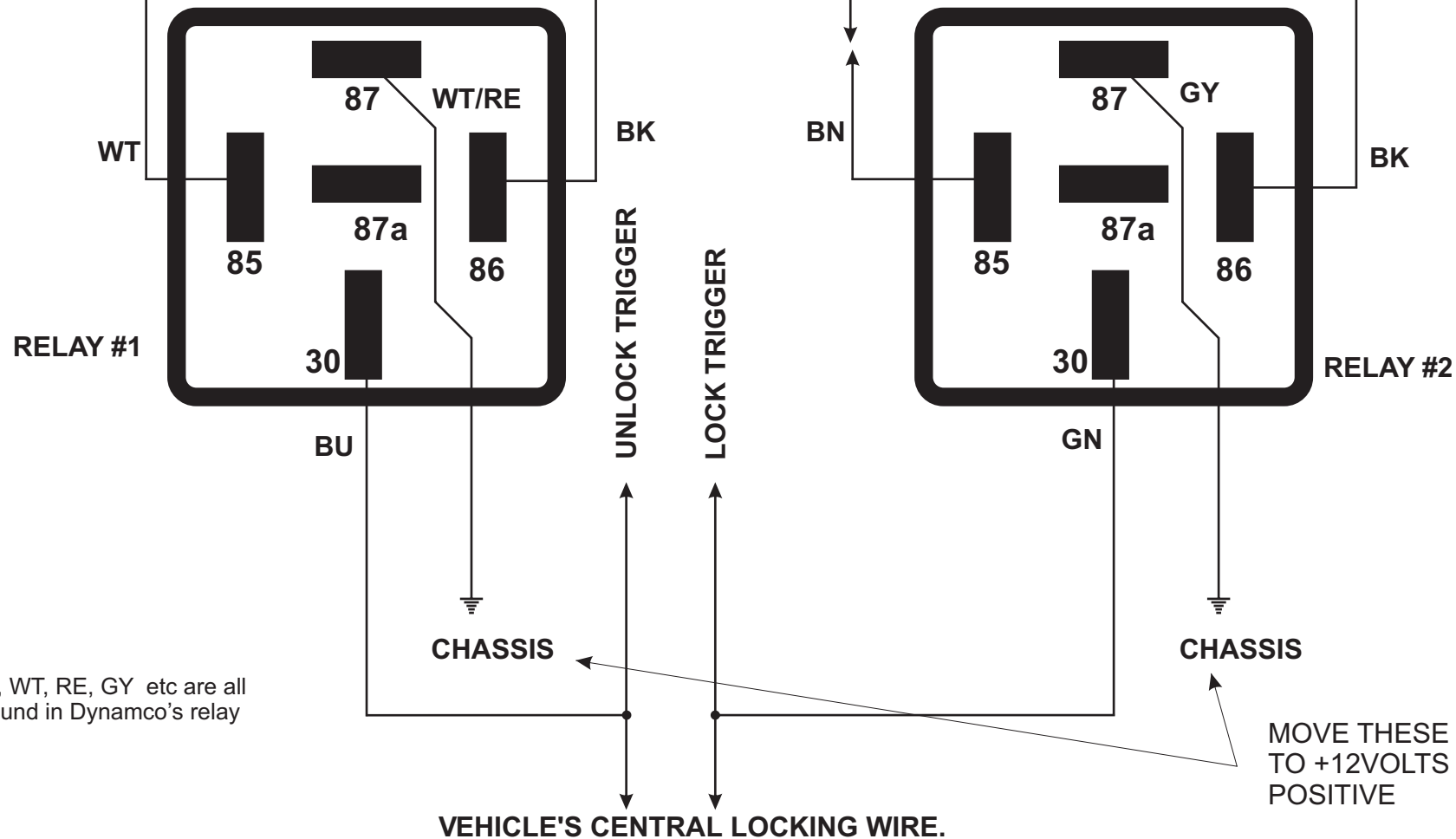


UNLOCK FROM ALARM

+12V

LOCK FROM ALARM

10A FUSE



** BK, BU, BN, WT, RE, GY etc are all wire colours found in Dynamco's relay sockets.

MOVE THESE CONNECTION TO +12VOLTS TO SWITCH POSITIVE

REL-003 CONFIGURATIONS

NEGATIVE TRIGGER

VEHICLE SWITCHES SEND A GROUND SIGNAL TO CONTROLLER TO MOVE ACTUATORS

REVISED : 21/04/2006

RELAY NOTICE : +12v

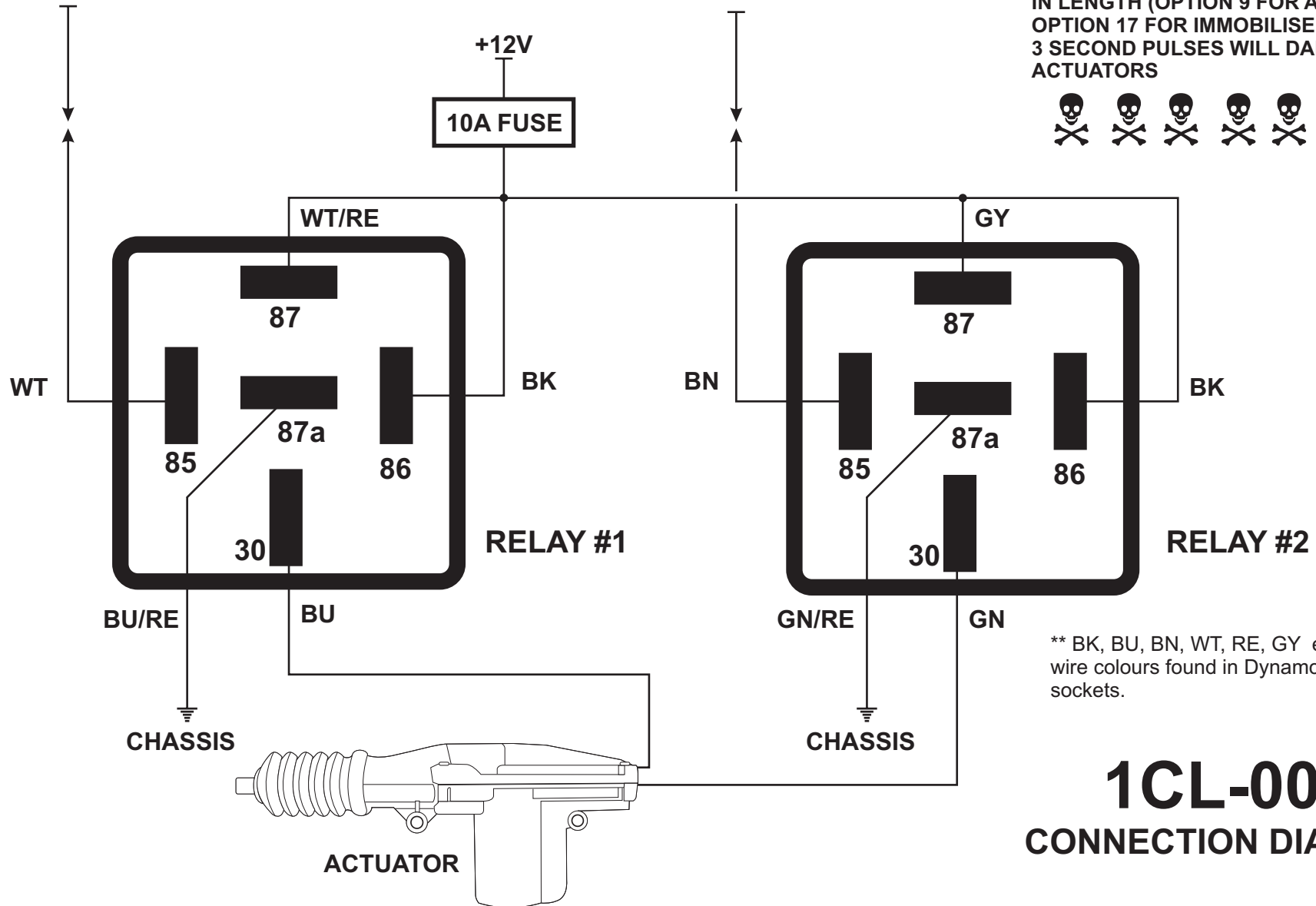
ENSURE THAT DIODE PROTECTED RELAYS HAVE THE CATHODE (BANDED END) OF THE PROTECTION DIODE FACING THE +12VOLTS.

DYNAMCO PTY LTD
Securing Vehicles Worldwide

UNLOCK FROM ALARM

LOCK FROM ALARM

ENSURE ALARM/IMMOBILISER CENTRAL LOCKING SIGNALS ARE SET TO 0.8SEC IN LENGTH (OPTION 9 FOR ALARMS, OPTION 17 FOR IMMOBILISERS). 3 SECOND PULSES WILL DAMAGE ACTUATORS



** BK, BU, BN, WT, RE, GY etc are all wire colours found in Dynamco's relay sockets.

1CL-001 CONNECTION DIAGRAM

REL-003 CONFIGURATIONS

DIRECT MOTOR DRIVE CIRCUIT(CHANGE OVER CONFIGURATION)
USE THIS CIRCUIT WHEN FITTING AN AFTER MARKET ACTUATOR.

REVISED : 21/04/2006

RELAY NOTICE : +12v

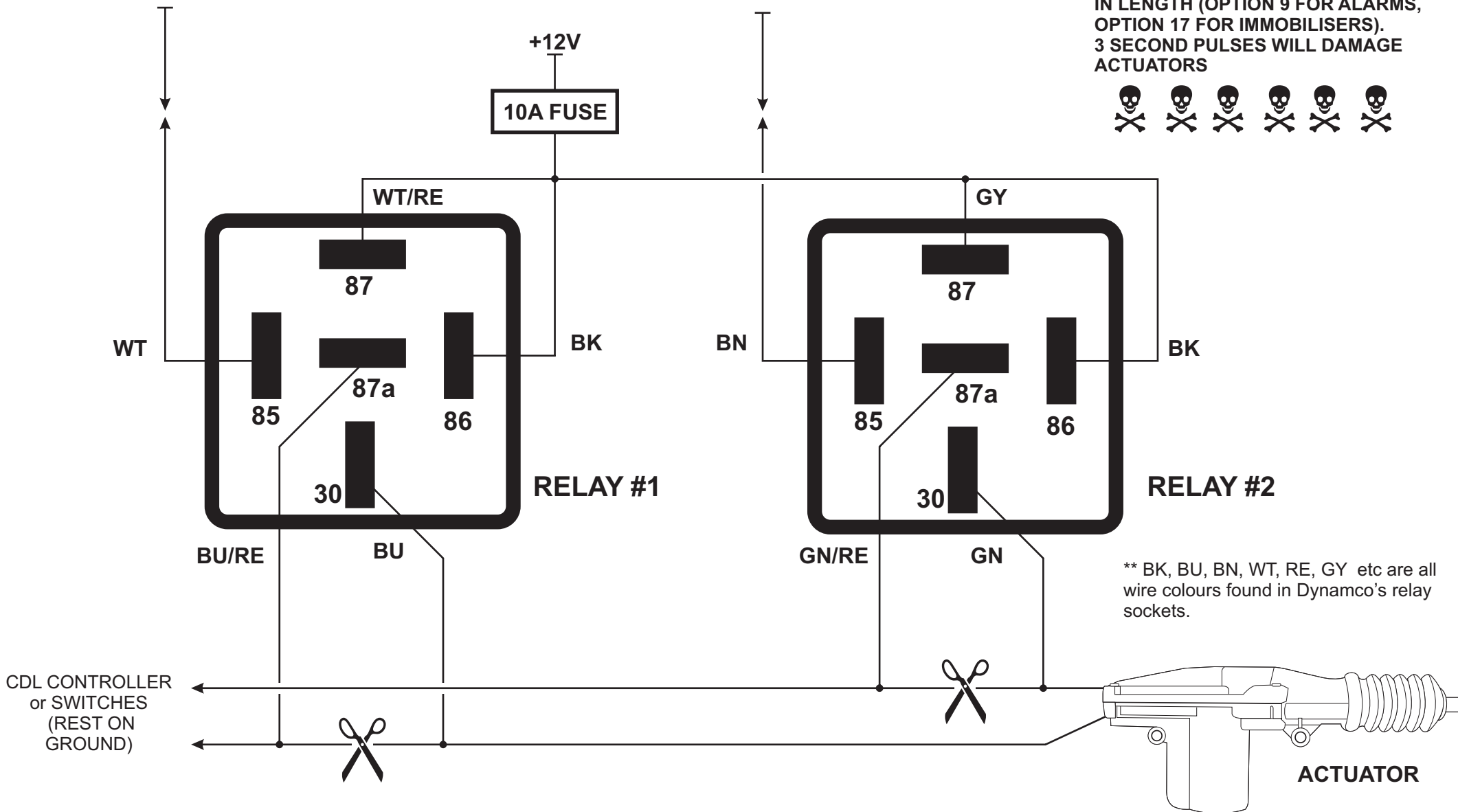
ENSURE THAT DIODE PROTECTED RELAYS HAVE THE CATHODE (BANDED END) OF THE PROTECTION DIODE FACING THE +12VOLTS.

DYNAMCO PTY LTD
Securing Vehicles Worldwide

UNLOCK FROM ALARM

LOCK FROM ALARM

ENSURE ALARM/IMMOBILISER CENTRAL LOCKING SIGNALS ARE SET TO 0.8SEC IN LENGTH (OPTION 9 FOR ALARMS, OPTION 17 FOR IMMOBILISERS). 3 SECOND PULSES WILL DAMAGE ACTUATORS



** BK, BU, BN, WT, RE, GY etc are all wire colours found in Dynamco's relay sockets.

REL-003 CONFIGURATIONS

DIRECT DRIVE IN VEHICLES WITH EXISTING DRIVER'S DOOR ACTUATOR - RELAYS MUST BE INSTALLED IN THE DOOR IF THE SWITCHES ARE LOCATED IN THE DOOR.

REVISED : 21/04/2006

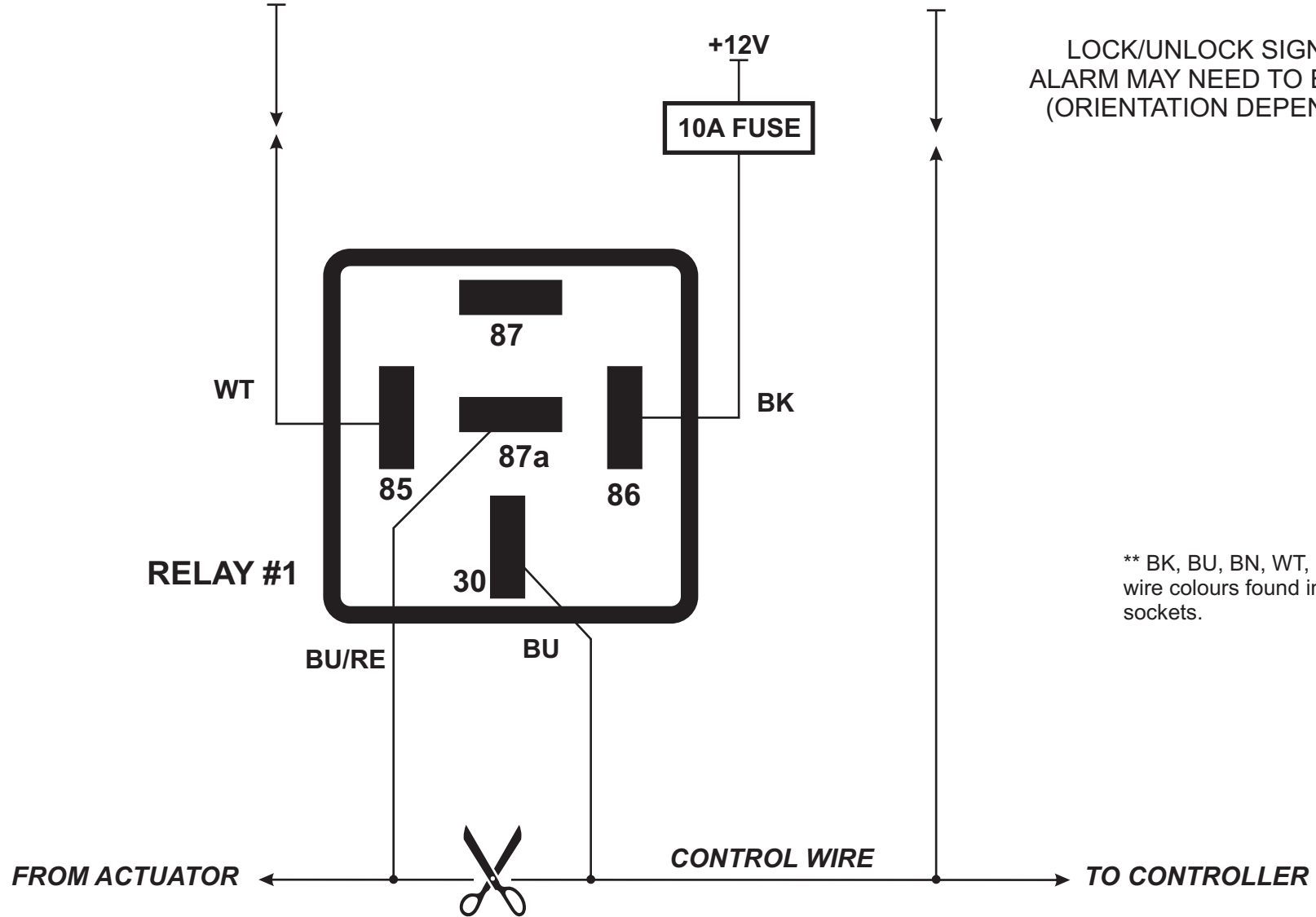
RELAY NOTICE : +12v

ENSURE THAT DIODE PROTECTED RELAYS HAVE THE CATHODE (BANDED END) OF THE PROTECTION DIODE FACING THE +12VOLTS.

DYNAMCO PTY LTD
Securing Vehicles Worldwide

UNLOCK FROM ALARM

LOCK FROM ALARM



LOCK/UNLOCK SIGNALS FROM ALARM MAY NEED TO BE REVERSED (ORIENTATION DEPENDS ON CAR)

** BK, BU, BN, WT, RE, GY etc are all wire colours found in Dynamco's relay sockets.

REL-003 CONFIGURATIONS

ONE WIRE CONTROL

- ALSO KNOWN AS OPEN CUT NEGATIVE. POPULAR IN NEW JAPANESE AND KOREAN VEHICLES.

REVISED : 21/04/2006

RELAY NOTICE : +12v

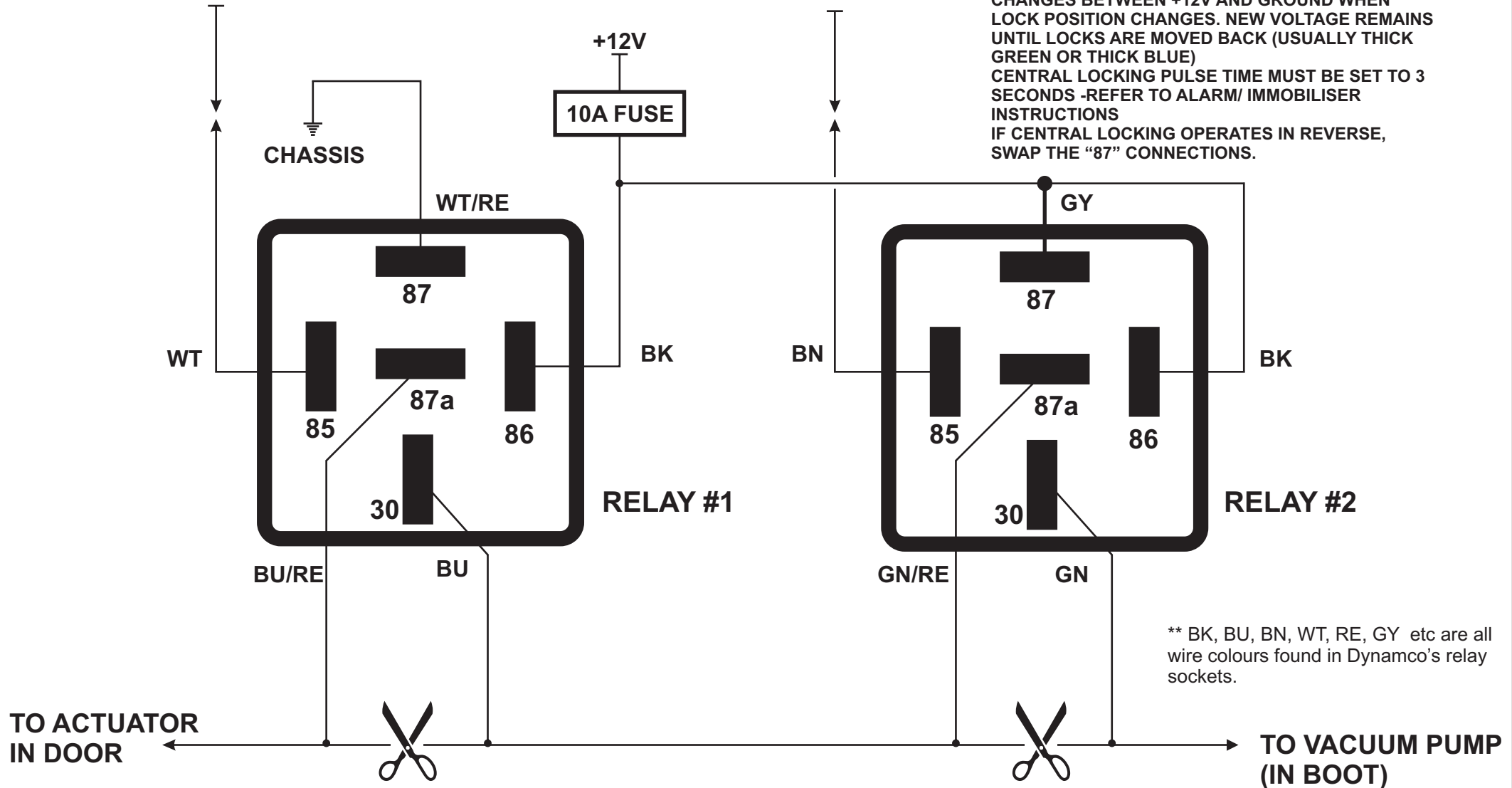
ENSURE THAT DIODE PROTECTED RELAYS HAVE THE CATHODE (BANDED END) OF THE PROTECTION DIODE FACING THE +12VOLTS.

DYNAMCO PTY LTD
Securing Vehicles Worldwide

UNLOCK FROM ALARM

LOCK FROM ALARM

THE CENTRAL LOCKING TRIGGER WIRE IS USUALLY FOUND IN THE DRIVER'S KICK PANEL. VOLATGE CHANGES BETWEEN +12V AND GROUND WHEN LOCK POSITION CHANGES. NEW VOLTAGE REMAINS UNTIL LOCKS ARE MOVED BACK (USUALLY THICK GREEN OR THICK BLUE)
CENTRAL LOCKING PULSE TIME MUST BE SET TO 3 SECONDS -REFER TO ALARM/ IMMOBILISER INSTRUCTIONS
IF CENTRAL LOCKING OPERATES IN REVERSE, SWAP THE "87" CONNECTIONS.



REL-003 CONFIGURATIONS

ONE WIRE VACUUM CONTROL

-SWITCHES +12 AND GND ALTERNATELY ON THE SAME WIRE. POPULAR WITH JAGUAR, AUDI AND MERCEDES PNEUMATIC

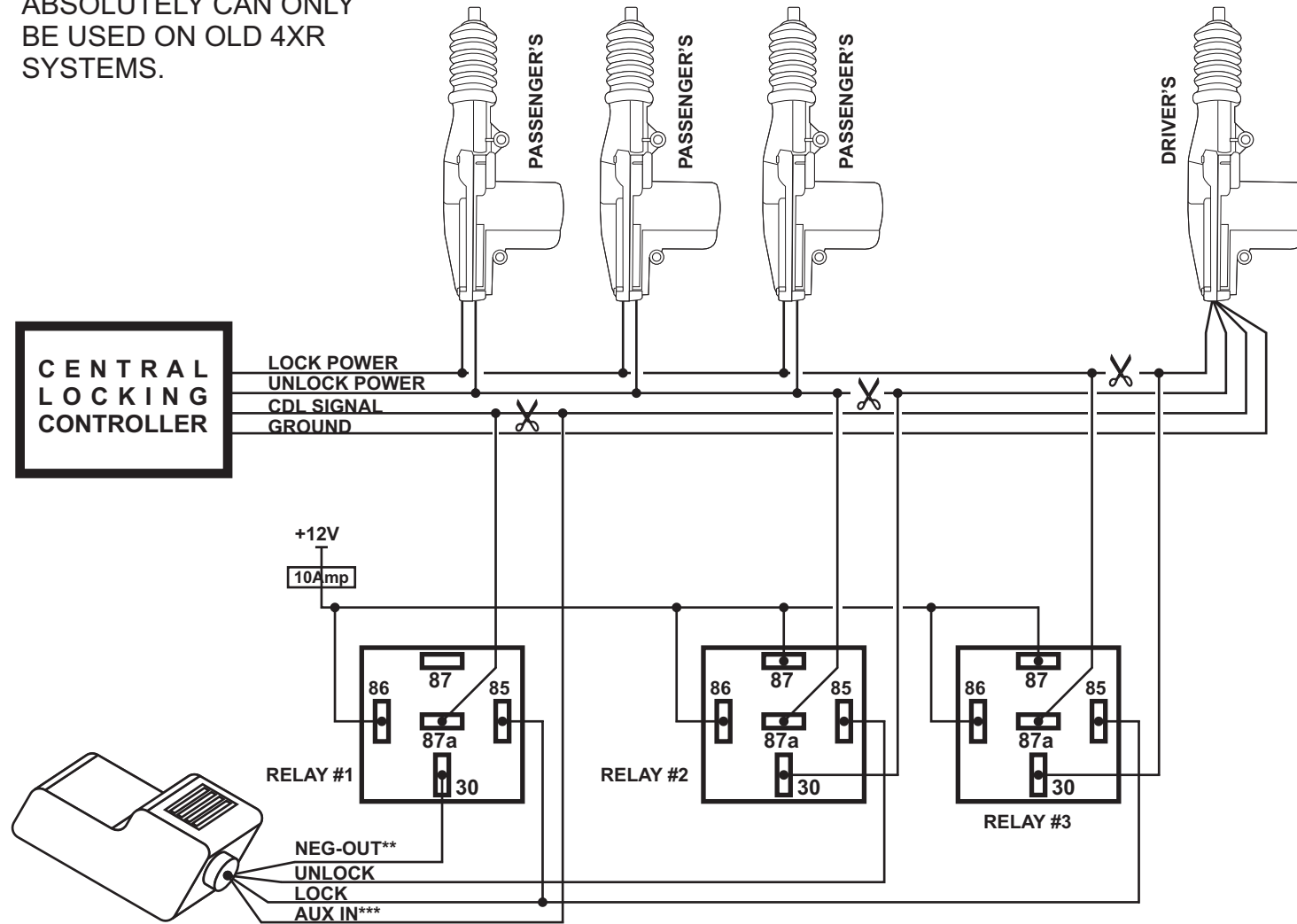
REVISED : 21/04/2006

RELAY NOTICE : +12v

ENSURE THAT DIODE PROTECTED RELAYS HAVE THE CATHODE (BANDED END) OF THE PROTECTION DIODE FACING THE +12VOLTS.

DYNAMCO PTY LTD
Securing Vehicles Worldwide

ABSOLUTELY CAN ONLY BE USED ON OLD 4XR SYSTEMS.



SINGLE WIRE SYSTEMS ARE VERY COMPLEX AND VARIED, PLEASE USE THIS DIAGRAM AS A GENERAL GUIDE - THIS INFORMATION WAS TAKEN FROM A HYUNDAI SONATA.

4XR,P350,P355,P375,P385 DUAL STAGE LOCKING

BY REPLACING THE STANDARD MICRO-CONTROLLER, THE 4XR MODULE WILL BE CAPABLE OF SENDING DUAL DOOR CENTRAL LOCKING SIGNALS.

NB: The passenger door actuators may burn out if a standard CPU is used by accident. To check - ensure the NEG-OUT wire outputs a ground only when the secondary button is pressed.

Wires name changes:

*** AUX becomes CDL SENSE. CDL SENSE is used to ensure passenger doors are locked and unlocked appropriately.

** Neg out when armed becomes PASSENGER UNLOCK. When the second button on a remote is pressed, the module will unlock and send a negative down the PASSENGER UNLOCK wire.

Operation in sequence order:

Assume alarm is armed and all doors are locked:

press primary button to unlock driver's door - alarm disarmed.

press primary button again to lock driver's door - alarm armed.

press primary button to unlock driver's door - alarm disarmed.

press secondary button to unlock all other doors - alarm disarmed.

press primary button to lock all doors - alarm armed.

press secondary button to unlock all doors at once - alarm disarmed.

REL-003 CONFIGURATIONS

DUAL DOOR WITH ONE CONTROL WIRE

-DRIVER'S DOOR UNLOCKS ON FIRST PRESS, ALL OTHER DOORS ON SECOND PRESS. ALL DOORS LOCK AT ONCE.

REVISED : 21/04/2006

RELAY NOTICE : +12v

ENSURE THAT DIODE PROTECTED RELAYS HAVE THE CATHODE (BANDED END) OF THE PROTECTION DIODE FACING THE +12VOLTS.



DYNAMCO PTY LTD
Securing Vehicles Worldwide

7XR,P355,P375,P385 DUAL STAGE LOCKING

Operation in sequence order:

Assume alarm is armed and all doors are locked:

press primary button to unlock driver's door - alarm disarmed.

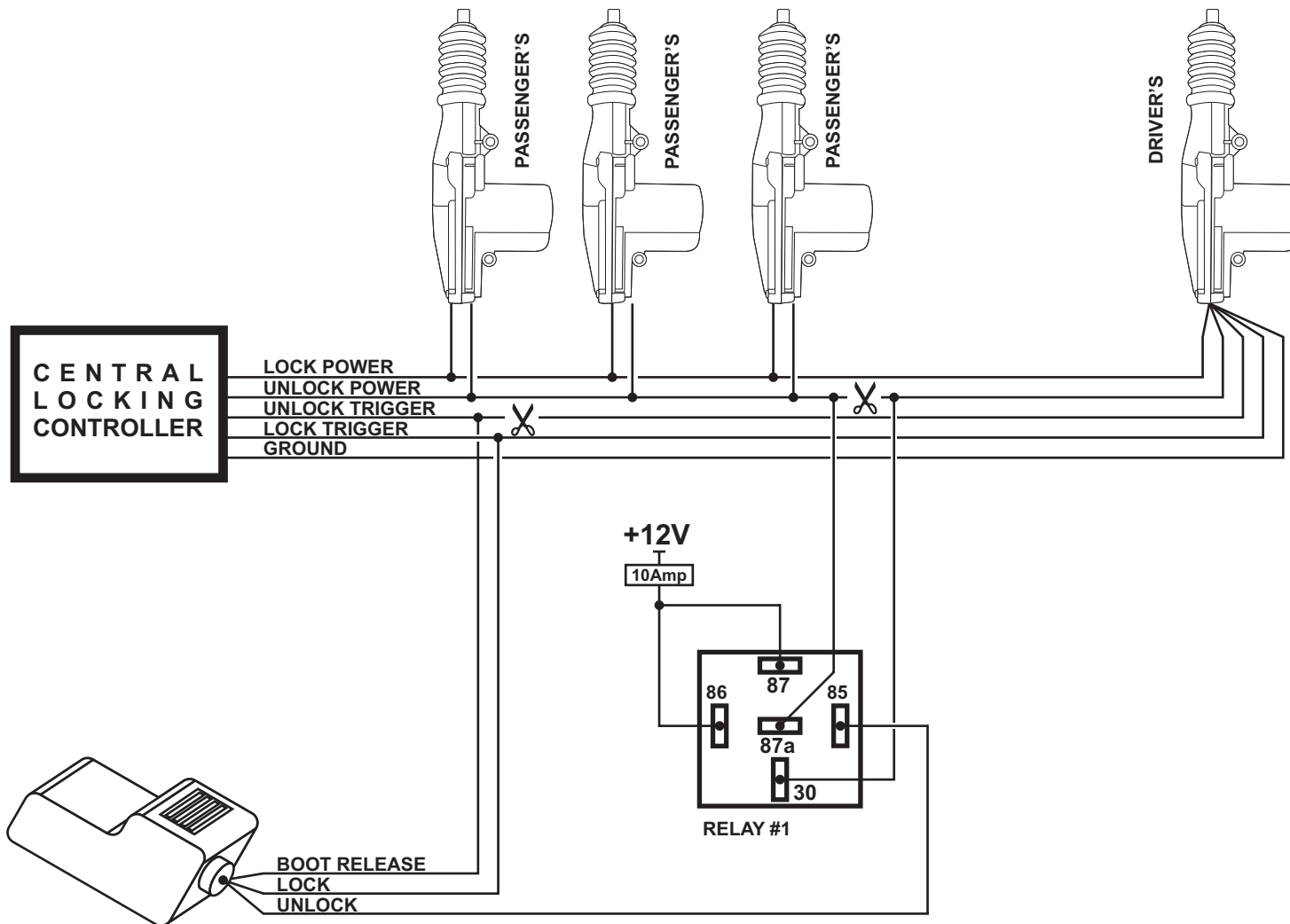
press primary button again to lock driver's door - alarm armed.

press primary button to unlock driver's door - alarm disarmed.

press secondary button to unlock all other doors - alarm disarmed.

press primary button to lock all doors - alarm armed.

press secondary button to unlock all doors at once - alarm disarmed.



REL-003 CONFIGURATIONS

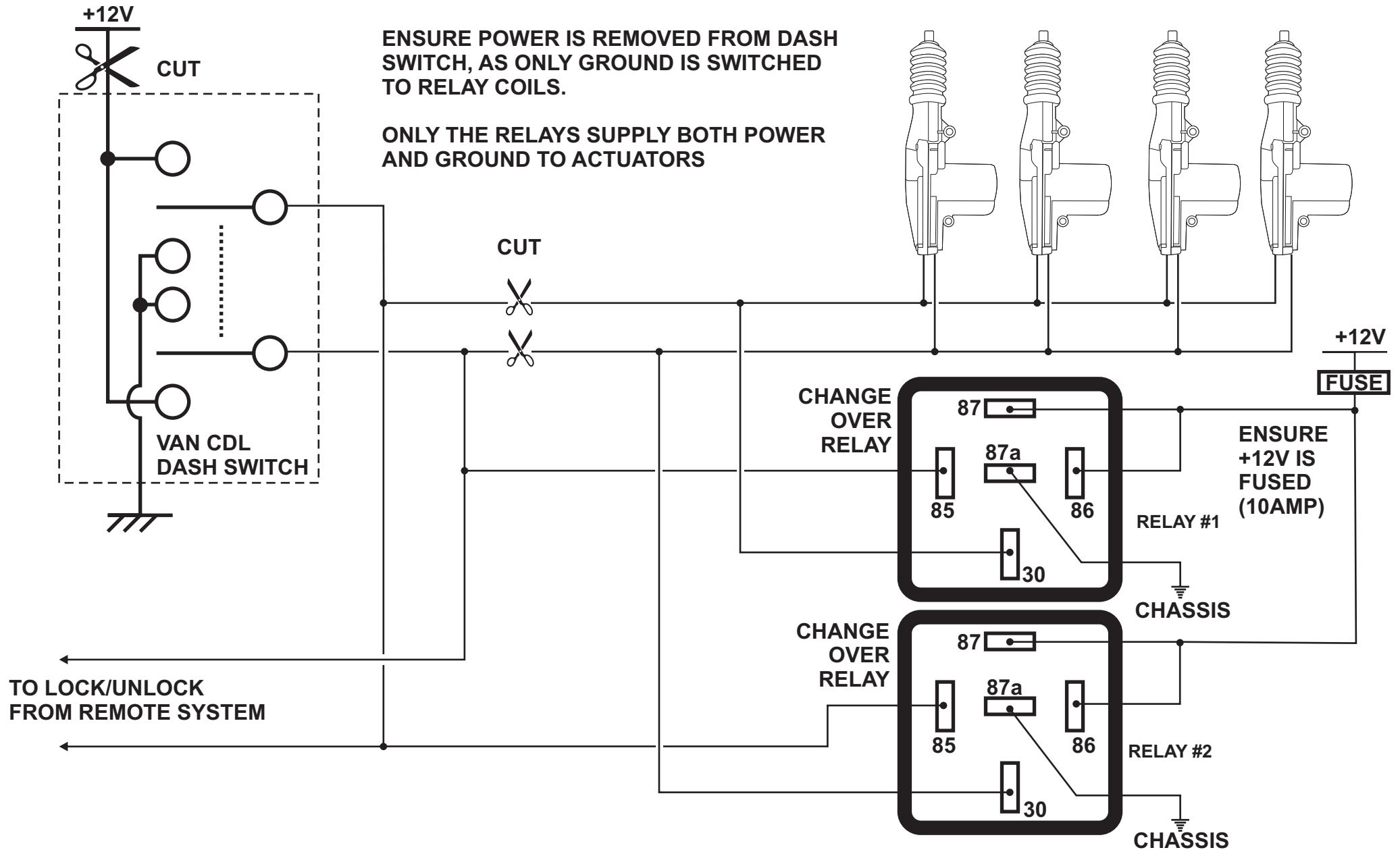
DUAL DOOR WITH TWO CONTROL WIRES

-DRIVER'S DOOR UNLOCKS ON FIRST PRESS, ALL OTHER DOORS ON SECOND PRESS. ALL DOORS LOCK AT ONCE.

REVISED : 21/04/2006

RELAY NOTICE : +12v
ENSURE THAT DIODE PROTECTED RELAYS HAVE THE CATHODE (BANDED END) OF THE PROTECTION DIODE FACING THE +12VOLTS.

DYNAMCO PTY LTD
Securing Vehicles Worldwide



REL-003 CONFIGURATIONS

VAN DASH SWITCH CENTRAL LOCKING

- WHERE THE +12V AND GROUND ARE SWITCHED TO ACTUATORS ONLY WHEN SWITCH IS PRESSED.

REVISED : 21/04/2006

RELAY NOTICE : +12v

ENSURE THAT DIODE PROTECTED RELAYS HAVE THE CATHODE (BANDED END) OF THE PROTECTION DIODE FACING THE +12VOLTS.

DYNAMCO PTY LTD
Securing Vehicles Worldwide